

2021

产品选型指南

PRODUCT SELECTION GUIDE



2021 产品选型指南

PRODUCT SELECTION GUIDE



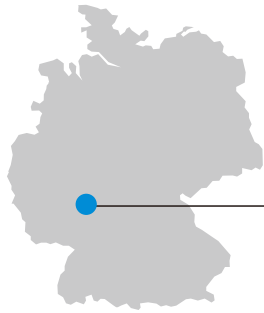
COMPANY PROFILE

公司简介

拓尔微电子是一家于2007年由留学生创办的半导体高新技术企业，致力于高性能模拟及数模混合集成电路和相关模组方案研发、生产和销售。竭力为客户提供高效、完整的系统解决方案。我们持续研究并开发BCD工艺技术、新颖的电路架构；建立各种先进的IP库；联合供应链建设强大的高自动化封测工厂。我们以完善的质量体系在研发、生产、市场、销售服务各个环节建设专业团队，面向客户推出高品质的产品。我们将一如既往、孜孜不倦地追求高品质、高性能、快交付、优服务的中国芯。

Toll Microelectronics is a hi-tech semiconductor enterprise founded by an overseas returnee in 2007, dedicated to R&D, production and marketing of high performance analog and mix-signal integrated circuits as well as relevant module solutions. To provide efficient and complete system solutions to our clients, we have been continuously developing on BCD process technology and novel circuit structures, establishing all kinds of advanced IP database and cooperating with the suppliers and vendors to construct the outstanding packaging test factories of high automation. We have set up our professional team in the chain of R&D, production, marketing and selling service based on our complete quality system to launch high-quality products to our clients. We will continuously provide the 'Chip of China' with high quality, high performance, fast delivery.

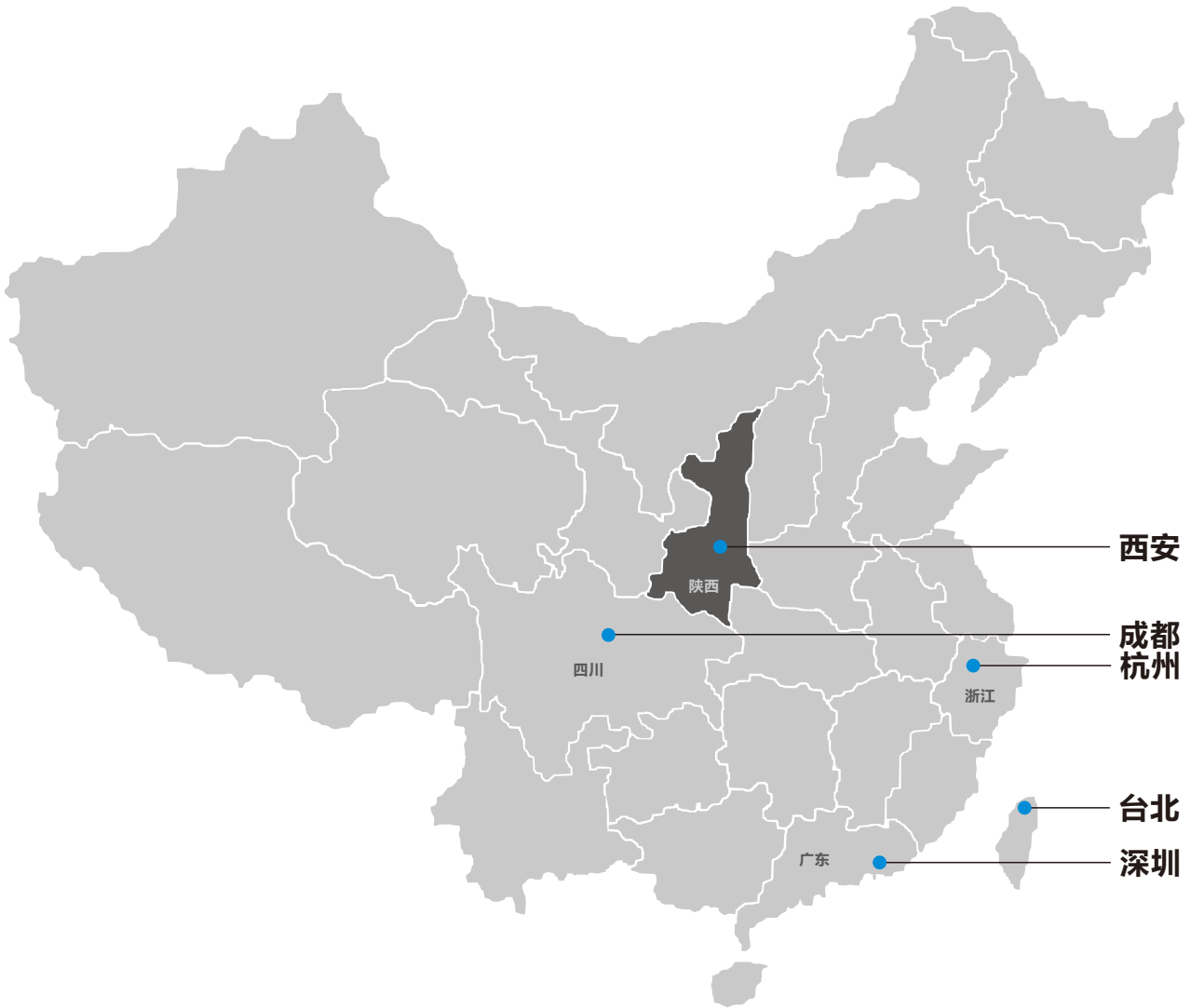




德国萨尔



日本



西安

成都
杭州

台北

深圳

目录

CONTENTS

POWER IC

DC/DC Switching Regulator	01
Linear Regulator	05
PMIC	05
LED Driver	06
USB Port Management	07
Protection, Switch and Reset	09

MOTOR DRIVER

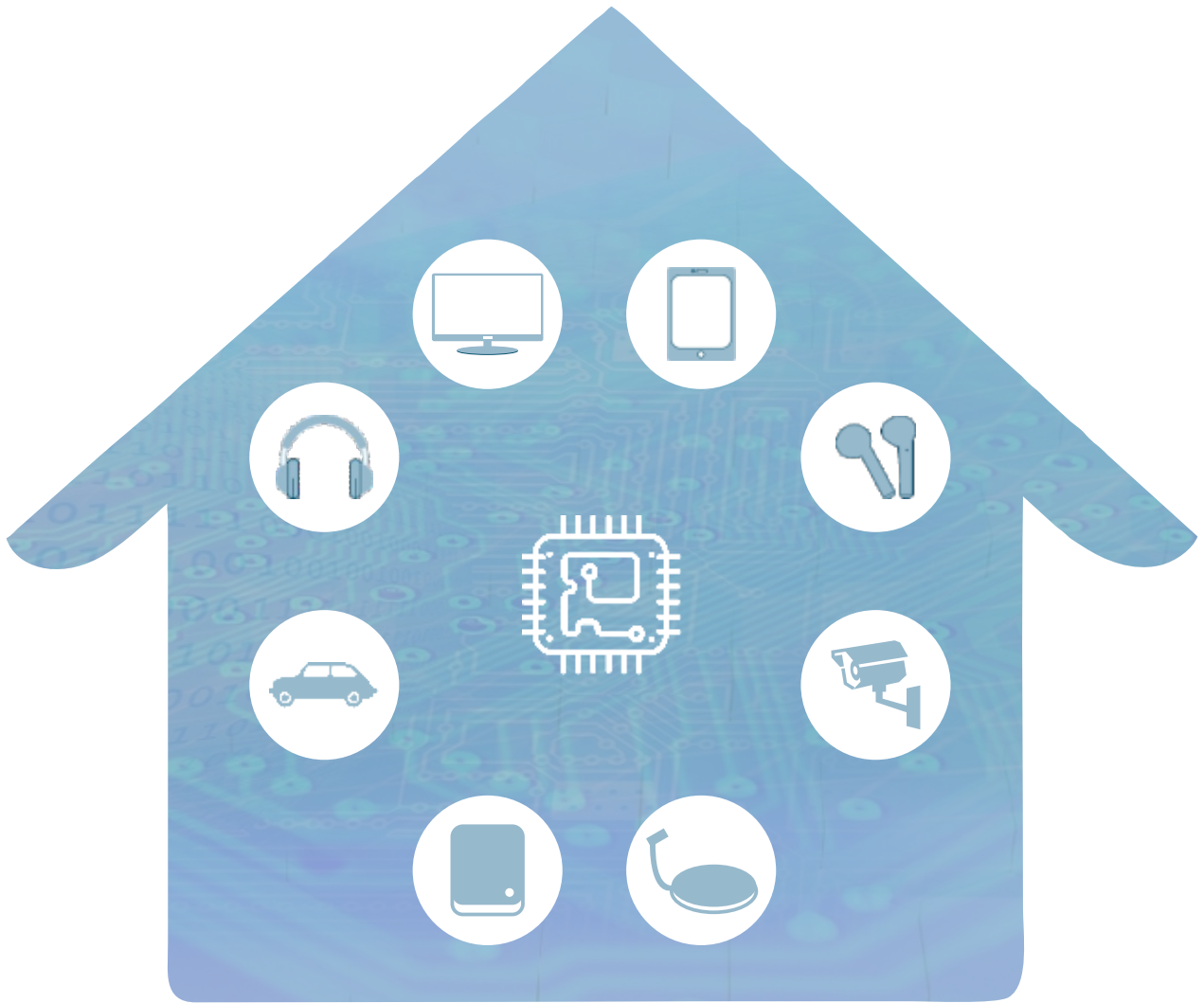
DC Motor Driver	13
STM Motor Driver	13

BATTERY MANAGEMENT

Battery Charger	15
Battery Protection	15

MARKETING NETWORK





POWER IC

DC/DC SWITCHING REGULATOR

Step Down DC/DC Switching Regulator (VIN_MAX ≤ 7V) (低压Buck转换器)

Part Number	V _{in} Range (V)	I _{out} (A)	Switching Frequency (Hz)	V _{FB} (V)	I _s (μA)	HSFET R _{DS(on)} (Ω)	LSFET R _{DS(on)} (Ω)	Control Mode	Functions	Package	Status
STI3406	2.5 to 5.5	0.8	1.5M	0.6	40	0.3	0.15	CM	PFM	SOT23-5	MP
TMI3181	2.5 to 5.5	0.8	1.5M	0.6	3	0.3	0.15	CM	PFM / Ultra-Low Iq	SOT23-5	Developing
TMI3171	2.5 to 6.5	0.8	1.5M	0.6	50	0.3	0.15	CM	PFM	SOT23-5	MP
TMI3108	2.5 to 5.5	1	1.5M	0.6	50	0.29	0.18	CM	PFM	SOT23-5	MP
TMI3101	2.5 to 6	1	2.3M	0.6	40	0.3	0.15	CM	PFM / High frequency	SOT23-5	MP
TMI3101D	2.5 to 6	1	2.3M	0.6	40	0.3	0.15	CM	PFM	DFN2x2-6	MP
TMI3408	2.5 to 6	1.2	1.5M	0.6	40	0.25	0.1	CM	PFM	SOT23-5	MP
TMI3408D	2.5 to 6	1.2	1.5M	0.6	40	0.25	0.1	CM	PFM	DFN2x2-6	MP
STI3408B	2.5 to 6	1.2	1.5M	0.6	40	0.25	0.1	CM	PFM	SOT23-5	MP
TMI3408F	2.5 to 5.5	1.2	1.5M	0.6	50	0.29	0.18	CM	FPWM	SOT23-5	MP
STI3408C	2.5 to 6	1.5	1.0M	0.6	40	0.2	0.09	CM	PFM	SOT23-5	MP
TMI3408C	2.5 to 5.5	1.5	1.5M	0.6	50	0.29	0.18	CM	PFM	SOT23-5	MP
TMI3411B	2.5 to 6	1.5	1.5M	0.608	40	0.15	0.07	CM	PFM	SOT23-5	MP
TMI3411	2.5 to 6	2	1.0M	0.6	40	0.15	0.07	CM	PFM	SOT23-5	MP
STI3411A	2.5 to 6	2	1.0M	0.6	40	0.15	0.07	CM	PFM	SOT23-5	MP
STI3411	2.5 to 6	2	1.0M	0.6	40	0.15	0.07	CM	PFM	SOT23-6	MP
TMI3112	2.7 to 5.5	2	1.0M	0.6	40	0.12	0.07	CM	PFM/ PGood	SOT23-6	MP
TMI3411P	2.7 to 5.5	2	1.0M	0.6	50	0.09	0.05	CM	PFM/ PGood	SOT23-6	MP
TMI3113H	2.7 to 5.5	2	2.3M	0.6	50	0.16	0.07	CM	PFM / PGood / High Frequency	SOT23-5	MP
TMI3113	2.7 to 5.5	3	1.0M	0.6	50	0.09	0.05	CM	PFM/ PGood	SOT23-6	MP
TMI3113B	2.7 to 5.5	3	1.0M	0.6	50	0.09	0.05	CM	PFM	SOT23-5	MP
TMI3113H2	2.7 to 5.5	3	1.5M	0.6	50	0.09	0.05	CM	PFM / PGood / High Frequency	SOT23-6	MP
TMI3113H2D	2.7 to 5.5	3	1.5M	0.6	50	0.09	0.05	CM	PFM / PGood / High Frequency	DFN2x2-8	MP
TMI3113D	2.7 to 5.5	3.5	1.0M	0.6	50	0.09	0.05	CM	PFM / PGood	DFN3x3-10	MP
TMI3163	2.7 to 5.5	3.5	1.0M	0.6	50	0.09	0.05	CM	PFM / PGood	DFN3x3-10	MP

Part Number	V _{in} Range (V)	I _{out} (A)	Switching Frequency (Hz)	V _{rs} (V)	I _s (μA)	HSFET R _{ds(on)} (Ω)	LSFET R _{ds(on)} (Ω)	Control Mode	Functions	Package	Status
STI8070A/B	2.5 to 5.5	5	2.1M	I ² C DVS	50	0.03	0.02	COT	I ² C DVS / PFM / COT	CSP20	MP
STI8071	2.5 to 5.5	5	2.1M	0.6	50	0.03	0.02	COT	PFM / COT	CSP20	MP
TMI3125	2.7 to 5.5	5	2.1M	0.6	50	0.03	0.02	COT	PFM / COT	DFN3*3-10	MP



Step Down DC/DC Switching Regulator (7V ≤ VIN_MAX ≤ 18V) (中压Buck转换器)

Part Number	V _{in} Range (V)	I _{out} (A)	Switching Frequency (Hz)	V _{rs} (V)	I _s (μA)	HSFET R _{ds(on)} (Ω)	LSFET R _{ds(on)} (Ω)	Control Mode	Functions	Package	Status
STI3470	3.5 to 18	2	600k	0.6	500	0.12	0.08	CM	PFM	SOT23-6	MP
STI3472	3.5 to 18	2	600k	0.8	400	0.12	0.07	CM	PFM	SOT23-6	MP
TMI3272T	3.5 to 18	2	600k	0.765	400	0.12	0.07	CM	PFM	SOT23-6	MP
TMI3280	3.5 to 18	2	600k	0.6	600	0.12	0.08	CM	FPWM	SOT23-6	MP
TMI3281	3.5 to 18	2	1M	0.6	600	0.12	0.08	CM	FPWM / High Frequency	SOT23-6	MP
TMI3282	3.5 to 18	2	1M	0.8	400	0.12	0.08	CM	FPWM / High Frequency	SOT23-6	MP
TMI3252S	4.5 to 18	2	600k	0.6	350	0.14	0.07	COT	PFM / Fast Response	SOT23-6	MP
TMI3252	4.5 to 18	2	600k	0.8	350	0.14	0.07	COT	PFM / Fast Response	SOT23-6	MP
TMI3252T	4.5 to 18	2	600k	0.765	350	0.14	0.07	COT	PFM / Fast Response	SOT23-6	MP
TMI3267	4.5 to 18	2	800k	0.6	300	0.09	0.045	COT	PFM / Fast Response	SOT563	MP
TMI3252F	4.5 to 18	2	600k	0.8	350	0.14	0.07	COT	FPWM / Fast Response	SOT23-6	MP
TMI3252TF	4.5 to 18	2	600k	0.765	350	0.14	0.07	COT	FPWM / Fast Response	SOT23-6	MP
TMI3252SH	4.5 to 18	2	1M	0.6	350	0.14	0.07	COT	PFM / High Frequency / Fast Response	SOT23-6	MP
TMI3252H	4.5 to 18	2	1M	0.8	350	0.14	0.07	COT	PFM / High Frequency / Fast Response	SOT23-6	MP
TMI3252TH	4.5 to 18	2	1M	0.765	350	0.14	0.07	COT	PFM / High Frequency / Fast Response	SOT23-6	MP
TMI3252SH2	4.5 to 18	2	1M	0.8	350	0.14	0.07	COT	FPWM / High Frequency / Fast Response	SOT23-6	MP
STI3470D	4.5 to 18	2	600k	0.6	350	0.14	0.07	COT	PFM / Fast Response	DFN2x2-6	MP
STI3482	4.5 to 18	2	550k	0.923	400	0.11	0.07	CM	PFM	SOP8	MP
TMI3257	4.5 to 18	2	800k	0.807	300	0.09	0.045	COT	PFM / Fast Response	SOT563	MP
STI3452HF	4.5 to 18	2	1MHz	0.805	300	0.09	0.045	COT	FPWM / High Frequency / Fast Response	SOT563	MP
STI3452HF2	4.5 to 18	2	1MHz	0.6	300	0.09	0.045	COT	FPWM / High Frequency / Fast Response	SOT563	MP

Part Number	V _{IN} Range (V)	I _{OUT} (A)	Switching Frequency (Hz)	V _{FB} (V)	I _Q (μ A)	HSFET R _{DS(on)} (Ω)	LSFET R _{DS(on)} (Ω)	Control Mode	Functions	Package	Status
TMI3258 / TMI3258B	4.5 to 18	3	600k	0.807/ 0.798	300	0.07	0.035	COT	PFM / Fast Response	SOT563	MP
STI3453	4.5 to 18	3	1M	0.805	300	0.07	0.035	COT	PFM / High Frequency / Fast Response	SOT563	MP
TMI3253	4.5 to 18	3	600k	0.8	300	0.07	0.035	COT	PFM / Fast Response	SOT23-6	MP
TMI3253T	4.5 to 18	3	600k	0.765	300	0.07	0.035	COT	PFM / Fast Response	SOT23-6	MP
TMI3253S	4.5 to 18	3	600k	0.6	300	0.07	0.035	COT	PFM / Fast Response	SOT23-6	MP
TMI3253H	4.5 to 18	3	1M	0.8	300	0.07	0.035	COT	PFM / High Frequency / Fast Response	SOT23-6	MP
TMI3253TH	4.5 to 18	3	1M	0.765	300	0.07	0.035	COT	PFM / High Frequency / Fast Response	SOT23-6	MP
TMI3253SH	4.5 to 18	3	1M	0.6	300	0.07	0.035	COT	PFM / High Frequency / Fast Response	SOT23-6	MP
STI3471	4.5 to 18	3	500k	0.6	300	0.08	0.04	COT	PFM	SOT23-6	MP
TMI3274T	3.5 to 18	3	600k	0.765	400	0.12	0.07	CM	PFM	SOT23-6	MP
STI3484	4.5 to 18	3	550k	0.923	400	0.11	0.07	CM	PFM	ESOP8	MP
TMI3244T	4.5 to 18	4	600k	0.765	300	0.065	0.03	COT	PFM / Fast Response	SOT23-6	MP
TMI3244	4.5 to 18	4	600k	0.8	300	0.065	0.03	COT	PFM / Fast Response	SOT23-6	MP
TMI3286 / TMI3286B	4.5 to 18	4	500k	0.8 / 0.925	300	0.06	0.035	COT	PFM / Fast Response	ESOP8	MP
TMI3255	4.5 to 18	5	600k	0.8	300	0.04	0.025	COT	PFM / Fast Response	DFN2x2-6FC	ES
TMI3255T	4.5 to 18	5	600k	0.765	300	0.04	0.02	COT	PFM / Fast Response	SOT23-6	ES
TMI3255F	4.5 to 18	5	600k	0.8	340	0.04	0.02	COT	FPWM/ High Frequency / Fast Response	DFN2x2-6FC	MP
TMI3208	4.5 to 18	8	700k	0.8	500	0.025	0.012	COT	PFM / Fast Response	QFN3x3-16	Developing
TMI3210	4.5 to 18	10	700k	0.8	500	0.017	0.01	COT	PFM / Fast Response	QFN3x3-16	Developing

Step Down DC/DC Switching Regulator (VIN_MAX ≥ 18V) (高压Buck转换器)

Part Number	V _{in} Range (V)	I _{out} (A)	Switching Frequency (Hz)	V _{is} (V)	I _s (μA)	HSFET R _{ds(on)} (Ω)	LSFET R _{ds(on)} (Ω)	Control Mode	Functions	Package	Status
TMI3359	4.5 to 30	1.2	1.4M	0.8	400	0.25	0.12	COT	Low Noise	SOT23-6	Developing
TMI3342	4.5 to 30	2	340k	0.92	380	0.14	0.09	CM	PFM External COMP.	SOP8	Developing
TMI33431	4.5 to 30	2.5	570k	0.8	450	0.12	0.08	CM	PFM External COMP/ Adj SS	SOP8	MP
TMI3343	4.5 to 30	3	340k	0.8	380	0.12	0.08	CM	PFM External COMP/ Adj SS	ESOP8	MP
TMI3343B	4.5 to 30	3	50k to 1.5M Adj.	0.8	380	0.12	0.08	CM	PFM External COMP/ Adj fsw	ESOP8	MP
TMI3344	4.5 to 30	3	340k	0.925	380	0.12	0.08	CM	PFM External COMP/ Adj SS	ESOP8	MP
TMI3343D	4.5 to 30	3	50k to 1.5M Adj.	0.8	380	0.12	0.08	CM	PFM External COMP/ Adj fsw	DFN3x3-10	MP
TMI33431E	4.5 to 30	3	570k	0.8	380	0.12	0.08	CM	PFM External COMP/ Adj SS	ESOP8	MP
TMI3331	8 to 30	3	130k to 500k Adj.	0.8	1000	0.08	0.06	CM	FPWM External COMP/ Adj SS	ESOP8	MP
TMI3331A	8 to 30	3	130k to 500k Adj.	0.8	1000	0.08	0.06	CM	PFM External COMP/ Adj SS	ESOP8	MP
TMI3494	5 to 40	5	200k	0.92	1000	0.04	NA	CM	Non-Sync.Buck Adj I _{limit}	ESOP8	MP
TMI3450	4.5 to 37	5	110k to 440k Adj.	1.22	800	Ext. PMOS	Ext. NMOS	CM	Sync.Buck Controller with Ext.P+NMOS	ESOP8	MP

Step Up DC/DC Switching Regulator (Boost转换器)

Part Number	V _{in} Range (V)	V _{out} Max (V)	I _{sw} Limit (A)	Switching Frequency (Hz)	V _{is} (V)	I _s (μA)	HSFET R _{ds(on)} (Ω)	LSFET R _{ds(on)} (Ω)	Control Mode	Functions	Package	Status
TMI5120	0.85 to 4.5	4.5	0.85	300k	Fixed V _{out}	20	0.65	0.45	CM	Sync.Boost / Fixed 2.2V,2.5V,2.8V,3.0V,3.3V Output Voltage	SOT23	MP
TMI5120C	0.85 to 4.5	4.5	0.85	300k	0.5	20	0.65	0.45	CM	Non-sync.Boost / Output Voltage Adjustable	SOT23-5	MP
STI3508/B	2.7 to 24	30	3	1M	0.6	450	NA	0.08	CM	Non-sync.Boost / FPWM	SOT23-6	MP
STI3508C	2.5 to 5.5	30	2.5	1.2M	0.6	450	NA	0.1	CM	Non-sync.Boost / FPWM	SOT23-6	MP
STI3508CB	2.5 to 5.5	30	2.5	1.2M	1.2	450	NA	0.1	CM	Non-sync.Boost / FPWM	SOT23-5	MP
TMI5130A	2.5 to 5.5	30	2.5	1.2M	1.2	30	NA	0.1	CM	Non-sync.Boost / PFM	SOT23-6	MP
TMI5130V5	2.5 to 5.5	Fixed 5V	2.5	1.2M	Fixed 5V V _{out}	30	NA	0.1	CM	Non-sync.Boost / PFM/ Fixed 5V Output Voltage	SOT23-6	ES
TMI5623	2.0 to 24	30	10	400k or Adj.	1.2	380	Ext. NMOS	Ext. NMOS	CM	Sync.Boost Controller	QFN4x4-16	Developing

LINEAR REGULATOR

Low Dropout Linear Regulator LDO (低压差线性转换器)

Part Number	V _{in} Range (V)	I _{OUT-PMAX} (A)	V _{OUT} or V _{FB} (V)	Accuracy	I _s (μA)	PSRR@1kHz (dB)	Noise (μV)	V _{Drop}	Functions	Package	Status
TMI6030/B	2.5 to 5.5	0.3	1.2/1.5/1.8/2.5/2.8/3.0/3.3/Adj from 1.2V	±2%	50	70	200	320mV@300mA	High PSRR	SOT23-5	MP
TMI6030C	2.5 to 5.5	0.3	1.2/1.5/1.8/2.5/2.8/3.0/3.3/Adj from 1.2V	±2%	50	70	200	320mV@300mA	High PSRR	SOT23	MP
TMI6030D	2.5 to 5.5	0.3	1.2/1.5/1.8/2.5/2.8/3.0/3.3/Adj from 1.2V	±2%	50	70	200	320mV@300mA	High PSRR	DFN4L 1x1	MP
TMI6050/B	2.5 to 5.5	0.6	1.2/1.5/1.8/2.5/2.8/3.0/3.3/Adj from 1.2V	±2%	50	60	200	600mV@600mA	Fast Response	SOT23-5	MP
TMI6201	3 to 24	0.15	2.8V/3.3V/5V/Adj from 1.0V	±2%	3	35	100	660mV@150mA	High Voltage Low Iq	SOT89-3 SOT23-5 SOT23-3	Developing
TMI6033	2 to 7	0.3	1.2/1.5/1.8/2.5/2.8/3.0/3.3	±2%	1	52	50	520mV@300mA	Low Iq Low Noise	SOT23-5 SOT23-3	Developing
TMI6053	2 to 7	0.5	1.2/1.5/1.8/2.5/2.8/3.0/3.3	±2%	1	52	50	1100mV@500mA	Low Iq Low Noise	SOT23-3 SOT23-5	Developing

PMIC

Multi-Channel DC/DC PMIC (多通道DC/DC PMIC)

Part Number	V _{in} Range (V)	Output Channels	I _{OUT} (A)	Switching Frequency (Hz)	V _{FB} (V)	Iq of each Channel(μA)	Functions	Package	Status
STI8021	2.5 to 5.5	2	1.2/ 1.2	1.5M	0.6	40	2 Channel Low Voltage Buck	DFN3x3-10	MP
TMI7003B	2.7 to 6	3	1/1/1	2.3M	0.6	40	3 Channels Low Voltage Buck / High Frequency	QFN3x3-20	MP
TMI7003C	2.5 to 5.5	3	1.5/1.5/1.5	1.5M	0.6	40	3 Channels Low Voltage Buck	QFN3x3-20	MP
TMI7003	2.7 to 5.5	3	2/2/2	1.0M	0.6	40	3 Channels Low Voltage Buck	QFN3x3-20	MP
TMI7004	2.7 to 5.5	4	2/2/2/2	1.0M	0.6	40	4 Channels Low Voltage Buck	QFN4x4-24	MP
TMI7105B	8 to 30	4	3/1/0.3/0.3	130k to 500k Adj./1.5M	0.8/0.6/1.2/1.2	9000/ 40/50/ 50	1 Channel High Voltage Buck 1 Channel Low Voltage Buck 2 Channels Low Voltage LDO	QFN4x4-16	MP

PMIC for LNB (LNB供电专用PMIC)

Part Number	V _{in} Range (V)	I _{out} (A)	Switching Frequency (Hz)	V _{out} (V)	Boost R _{ds(on)} (Ω)	22kHz Single Ripple(mV)	Functions	Package	Status
STI8033	2.0 to 24	0.35	1M	Adjustable	0.12	70	Boost Converter with 0.6V and 0.8V selectable VFB Voltage	SOT23-6	MP
STI8035	9 to 14	0.6	1M	14/ 19	0.12	40	Boost + Linear Regulator	ESOP8	MP
STI8036	9 to 14	0.5	1M	14/ 19	0.12	40	Boost + Linear Regulator / For Electrolytic Cap.	ESOP8	MP
STI8036B	9 to 14	0.5	1M	14/ 19	0.12	40	Boost + Linear Regulator / For Electrolytic Cap./ High Accuracy	ESOP8	MP
TMI8037	9 to 14	0.5	1M	14/ 19	0.12	40	Boost + Linear Regulator / For Electrolytic Cap.	ESOP8	MP
TMI8038	9 to 14	0.5	1M	14/ 19	0.12	40	Boost + Linear Regulator / For Electrolytic Cap./ Small Package	MSOP8	MP
TMI8135	9 to 14	0.5	1M	14/ 19	0.12	40	Boost + Linear Regulator / For Electrolytic Cap.	ESOP8	MP
TMI8100	9 to 14	0.5	1M	14/ 19	0.12	40	Boost + Linear Regulator / For Electrolytic Cap./ Small Package	CPC8	MP
STI8039	9 to 14	0.8	1M	14/ 19	0.1	30	Boost + Linear Regulator / I ² C Interface	QFN3x3-16	Developing

LED DRIVER

White LED Backlight Drive (背光LED驱动)

Part Number	V _{in} Range (V)	V _{out} OVP (A)	I _{sw,Limit} (A)	Switching Frequency (Hz)	V _{rs} (V)	I _s (μA)	LSFET R _{ds(on)} (Ω)	Control Mode	Functions	Package	Status
STI9287	2.5 to 24	30	1.7	1.0M	0.2	20	0.2	CM	Non-sync.Boost	SOT23-6	MP
STI9287B	2.7 to 24	30	1.5	1.0M	0.202	20	0.2	CM	Non-sync.Boost	SOT23-6	MP
STI9287C	2.7 to 5.5	30	1.5	1.2M	0.2	20	0.15	CM	Non-sync.Boost	SOT23-6	MP
STI9287CA	2.7 to 5.5	30	1.5	1.2M	0.25	20	0.15	CM	Non-sync.Boost	SOT23-6	MP

Step Down DC/DC LED Drive (降压DC/DC LED驱动)

Part Number	V _{in} Range (V)	I _{out} (A)	Switching Frequency (Hz)	V _{rs} (mv)	I _s (μA)	HSFET R _{ds(on)} (Ω)	LSFET R _{ds(on)} (Ω)	Control Mode	Functions	Package	Status
TMI5101	2.5 to 5.5	1	1.5M	100	50	0.29	0.18	CM	PFM	SOT23-5	MP
TMI5102	2.5 to 5.5	2	1.5M	100	50	0.15	0.07	CM	PFM	SOT23-5	MP
TMI5302	4.5 to 30	2	1.0M	100	350	0.14	0.07	CM	PFM	SOT23-6	Developing

USB PORT MANAGEMENT

Step Down DC/DC for Car and USB Charger (车充及USB供电降压DC/DC转换器)

Part Number	V _{in} Range (V)	I _{out} (A)	Switching Frquency (Hz)	V _{in} (V)	I _s (μA)	HS/LS R _{ds(on)} (mΩ)	CS Limit	Operation Mode	Functions	Package	Status
TMI2242	8 to 30	2.4	130k to 500k Adj.	0.8	5	80/60	64	FPWM	N+NMOS	ESOP8	MP
TMI2242D	8 to 30	2.4	130k to 500k Adj.	0.8	5	80/60	64	FPWM	N+NMOS	ESOP8	MP
TMI2243	4.5 to 30	2.4	120k	Fixed 5V Output	1	75/40	NA	PFM	P+NMOS/Fixed 5V Output	SOP8	MP
TMI2243D	4.5 to 30	2.4	120k	Fixed 5V Output	1	75/40	NA	PFM	P+NMOS/Fixed 5V Output/2.7V fixed D+/D-	SOP8	MP
TMI2242E	8 to 30	2.4	130k to 500k Adj.	0.8	1	80/60	64	PFM	N+NMOS	ESOP8	MP
TMI2282L	4.5 to 30	2.4	120k to 440k Adj.	1.22	10	75/40	NA	FPWM	P+NMOS	SOP8	MP
TMI2282	4.5 to 30	3	120k to 440k Adj.	1.22	10	60/35	NA	FPWM	P+NMOS	SOP8	MP
TMI2283Q	4.5 to 30	3	120k to 440k Adj.	1.22	10	45/25	NA	FPWM	P+NMOS24W Constant Power	SOP8	MP
TMI2283QE	4.5 to 30	3	120k to 440k Adj.	1.22	1	45/25	NA	PFM	P+NMOS 24W Constant Power	SOP8	MP
TMI2282Q	4.5 to 30	3	120k to 440k Adj.	1.22	10	75/40	NA	FPWM	P+NMOS 18W Constant Power	SOP8	MP
TMI2288	4.5 to 30	3	120k to 440k Adj.	1.22	10	35/25	NA	FPWM	P+NMOS High Efficiency	SOP8	MP
TMI2286D	4.5 to 30	3	120k	1.22	1	25/25	NA	PFM	P+NMOS/EN Control/External PMOS Driver	SOP8	MP
TMI2286	4.5 to 30	3.4	120k to 280k Adj.	1.22	1	25/25	NA	PFM	P+NMOS EN Control	SOP8	MP
TMI2243B	4.5 to 30	3.4	120k	Fixed 5V Output	1	75/40	NA	PFM	P+NMOS / Fixed 5V Output	SOP8	MP
TMI2244C	4.5 to 30	3.4	120k	Fixed 5V Output	1	35/30	NA	PFM	P+NMOS / Fixed 5V Output	SOP8	MP
TMI2244D	4.5 to 30	3.4	120k	Fixed 5V Output	1	75/40	NA	PFM	P+NMOS/Fixed 5V Output/2.7V fixed D+/D-	SOP8	MP
TMI2282LQ	4.5 to 30	3.4	120k to 440k Adj.	1.22	10	75/40	NA	FPWM	P+NMOS / 18W Constant Power	SOP8	MP
TMI2244B	8 to 30	3.4	120k to 500k Adj.	0.8	5	40/23	64	FPWM	N+NMOS	SOP8	MP
TMI2244E	8 to 30	3.4	120k to 500k Adj.	0.8	1	40/23	64	PFM	N+NMOS	SOP8	MP
TMI2245	8 to 30	4.8	130k to 500k Adj.	0.8	1	40/External	64	PFM	N+NMOS / External LS MOS Driver	ESOP8	MP
TMI2245F	8 to 30	4.8	130k to 500k Adj.	0.8	1	40/External	64	FPWM	N+NMOS / External LS MOS Driver	ESOP8	MP
TMI2282H	4.5 to 40	2.4	120k to 440k Adj.	1.22	1	55/30	NA	PFM	P+NMOS / High Voltage	SOP8	MP
TMI2284Q	4.5 to 40	3	120k to 440k Adj.	1.22	1	45/25	NA	PFM	P+NMOS / High Voltage	SOP8	MP

USB Dedicated Charge Port Interface (USB口充电识别IC)

Part Number	V _{in} Range (V)	No. of Channel	Dedicated Charge Schemes	Supports D+/D- = 1.2V/1.2V	BC1.2 Mode	YD/T 1591-2009 Mode	Package	Status
TMI9130A	4.5 to 5.5	Dual	D+/D- = 2.7V/2V	Yes	Yes	Yes	SOT23-6	MP
TMI9130B	4.5 to 5.5	Single	D+/D- = 2.7V/2V	Yes	Yes	Yes	SOT23-6	MP
TMI9130C	4.5 to 5.5	Dual	D+/D- = 2.7V/2.7V	Yes	Yes	Yes	SOT23-6	MP
TMI9130D	4.5 to 5.5	Single	D+/D- = 2.7V/2.7V	Yes	Yes	Yes	SOT23-6	MP
TMI9130E	4.5 to 5.5	Single	D+/D- = 2.7V/2.7V or 2.7V/2V	Yes	Yes	Yes	SOT23-5	MP
TMI9130F	4.5 to 5.5	Single	D+/D- = 2.7V/2V	Yes	Yes	Yes	SOT23-5	MP
TMI9130I	4.5 to 5.5	Single	D+/D- = 2V/2.7V or 2.7V/2V	Yes	Yes	Yes	SOT23-5	MP

USB Dedicated Charge Port Interface (USB口快充识别IC)

Part Number	V _{in} Range (V)	Support Hisilicon FCP	Support QC 2.0/QC3.0	Automatic Select FCP and QC2.0/3.0	Supports D+/D- = 2.7V/2.7V	Supports D+/D- = 1.2V/1.2V	BC1.2 and YD/T 1591-2009 Mode	Package	Status
TMI9290	3.2-6.4	YES	YES	YES	Yes	Yes	Yes	SOT23-6	MP
TMI9290A	3.2-6.4	YES	YES	YES	Yes	Yes	Yes	SOT23-6	MP
TMI9291	3.2-6.4	YES	YES	YES	Yes	Yes	Yes	SOP8	MP

PROTECTION, SWITCH AND RESET

Load Switch (负载开关)

Part Number	V _{IN} Range (V)	Current Limit (A)	R _{ds(on)} (mΩ)	Output Reverse Voltage Protection	FLAG Signal	Output Discharge	EN Logic	Package	Status
STI9712	2.5 to 5.5	ADJ	90	N	N	N	H	SOT23-5	MP
TMI6260A	2.5 to 5.5	ADJ	60	Y	N	N	H	SOT23-5	MP
TMI6260B	2.5 to 5.5	ADJ	60	Y	N	N	H	SOT23-5	MP
TMI6260C	2.5 to 5.5	ADJ	60	Y	Y	N	H	SOT23-6	MP
TMI6260D	2.5 to 5.5	ADJ	60	Y	Y	N	H	DFN2x2-6	MP
TMI6261A	2.5 to 5.5	0.8	60	Y	Y	N	H	SOT23-6	MP
TMI6261B	2.5 to 5.5	1.5	60	Y	Y	N	H	SOT23-5	MP
TMI6261C	2.5 to 5.5	2.1	60	Y	Y	N	H	SOT23-5	MP
TMI6261B1	2.5 to 5.5	1.5	60	Y	Y	Y	H	SOT23-5	MP
TMI6262AL	2.5 to 5.5	ADJ	60	Y	N	N	L	SOT23-5	MP
TMI6263AH	2.5 to 5.5	2.5	60	Y	Y	Y	H	SOT23-5	MP
TMI6263AL	2.5 to 5.5	2.5	60	Y	Y	Y	L	SOT23-5	MP
TMI6263BH	2.5 to 5.5	ADJ	60	Y	N	Y	H	SOT23-5	MP
TMI6263CH	2.5 to 5.5	2.4	60	Y	N	Y	H	SOT23-5	MP
TMI6267AH	2.5 to 5.5	1.5	60	Y	N	Y	H	SOT23-5	MP
TMI6283H	2.4 to 18	2	100	Y	N	Y	H	QFN3*3-16	ES

Power Switch (电源开关)

Part Number	V _{IN} Range (V)	Current Limit (A)	R _{ds(on)} (mΩ)	Input OVP (V)	Output Reverse Voltage Protection	Output Discharge	Soft Start	Package	Status
TMI6240	2.7 to 18	4	45	19.1	N	Y	Ext. C _{ss} Adj.	SOT23-5	MP
TMI6240S	2.7 to 18	4	45	19.1	N	Y	Ext. C _{ss} Adj.	ESOP8	MP
TMI6241	2.7 to 6	4	60	6.4	N	Y	Ext. C _{ss} Adj.	SOT23-5	MP
TMI6241A	2.7 to 18	4	60	19.1 OVP 5.7V Clamp	N	Y	Ext. C _{ss} Adj.	SOT23-5	MP
TMI6241D	2.7 to 18	4	60	19.1 OVP 5.7V Clamp	N	Y	Ext. C _{ss} Adj.	DFN3x3-10	MP

Reset IC (复位芯片)

Part Number	V _{in} Range (V)	I _q (μA)	Monitor Voltage Threshold (V)	Accuracy	Reset Signal Delay Time (ms)	Output Status	Package	Status
TMI6809	1.0 to 5.5	5	2.32 / 2.63 / 2.93 / 3.08 / 4.00 / 4.38 / 4.63	±2%	240	Low Logic Push-pull	SOT23-3	MP
TMI6810	1.0 to 5.5	5	2.32 / 2.63 / 2.93 / 3.08 / 4.00 / 4.38 / 4.63	±2%	240	High Logic Push-pull	SOT23-3	MP

Dying Gasp Storage and Release Converter (断电保护)

Part Number	V _{in} Range (V)	I _{release} (A)	V _{Storage Max} (V)	I _{charge} (A)	VFB1 (V)	VFB2 (V)	Function	Package	Status
TMI5111	5 to 18	2	28	0.3	1	1	Charge Pump + Linear Regulator	SOP8	MP







MOTOR DRIVER

MOTOR DRIVER

DC Motor Driver (直流有刷马达驱动)

Part Number	VM (V)	VCC (V)	Continue/Peak Current(A)	$R_{ds(on)}$ (HS+LS)(Ω)	CC mode	Protection	Package	Status
TMI8113	1.8 to 7.0	/	1.4/1.6	0.5	-	TSD	SOT23-6	MP
TMI8118	1.8 to 7.0	/	1.4/1.6	0.5	-	TSD	SOT23-6	MP
TMI8118S	1.8 to 7.0	/	1.4/1.6	0.5	-	TSD	SOP8	MP
TMI8208	1.8 to 7.0	/	1.4/1.6	0.5	-	TSD	SOP8	MP
TMI8837	1.8 to 12	1.8 to 6	1.5/2	0.65	-	UVLO, TSD, OCP	DFN2x2-8	MP
TMI8837S	1.8 to 12	1.8 to 6	1.4/1.8	0.7	-	UVLO, TSD, OCP	SOP8	MP
TMI8230	1.8 to 12	1.8 to 6	3/3.5	0.28	-	UVLO, TSD, OCP	DFN2x2-8	ES
TMI8230S	1.8 to 12	1.8 to 6	2.5/3.2	0.28	-	UVLO, TSD, OCP	ESOP8	MP
TMI8260SP	3 to 20	/	3.8/9	0.08	-	UVLO, TSD, OCP	SOP8	MP
TMI8260DP	3 to 20	/	6.5/14	0.076	-	UVLO, TSD, OCP	DIP8	MP
TMI8261	3 to 20	/	5/12	0.07	-	UVLO, TSD, OCP	SOP8	MP
TMI8360SP	3 to 28	/	3.6/9	0.092	-	UVLO, TSD, OCP	SOP8	MP
TMI8360DP	3 to 28	/	3.8/10	0.095	-	UVLO, TSD, OCP	DIP8	MP
TMI8460SP	3 to 36	/	3/10	0.15	-	UVLO, TSD, OCP	SOP8	ES
TMI8870/B/1/2	6.5 to 45	/	1/3.6	1	√	UVLO, TSD, OCP	ESOP8	MP
TMI8870K	6.5 to 36	/	0.5/1.5	1.6	-	UVLO, TSD, OCP	ESOP8	MP
TMI8876	6.5 to 36	/	1.5/3.6	0.5	√	UVLO, TSD, OCP	QFN16 ETSSOP16	ES

STM Motor Driver (步进马达驱动)

Part Number	VM (V)	Input Mode	Continue/Peak Current(A)	$R_{ds(on)}$ (HS+LS)(Ω)	CC mode	Protection	Package	Status
TMI8120	1.8 to 7.0	PWM (2 lines)	1.4/1.6	0.5	-	TSD	QFN20 3*3	MP
TMI8548	4.0 to 20	PWM (2 lines)	1.2/1.8	0.83	-	UVLO, TSD, OCP	SSOP10	MP
TMI8549	4.0 to 20	PWM (1 line)	1.2/1.8	0.83	-	UVLO, TSD, OCP	SSOP10	MP
TMI88221	4.0 to 20	PWM (Sin.)	1.2/1.8	0.83	-	UVLO, TSD, OCP	ESOP8	MP
TMI8423	6.5 to 45	PWM (2 lines)	1.2/3.6	1	√	UVLO, TSD, OCP	ETSSOP20	MP



BATTERY MANAGEMENT

Battery Charger IC

Battery Charger (电池充电)

Part No	V _{IN} Range (V)	V _{BAT} (V)	I _{CHG} (A)	I _{BAT_STB} (μA)	V _{OUT_MAX} (V)	Function	Package	Status
TMI4054	2 to 8	4.2 ± 1%	Adj. up to 0.8	2.5	/	ICHG adjustable	SOT23-5	MP
TMI4054H	2 to 8	4.35 ± 1%	Adj. up to 0.8	2.5	/	ICHG adjustable	SOT23-5	MP
TMI4056	2 to 8	4.2 ± 1%	Adj. up to 1.0	2.5	/	ICHG adjustable/NTC Thermal Sense	SOP8	MP
TMI4056H	2 to 8	4.35 ± 1%	Adj. up to 1.0	2.5	/	ICHG adjustable/NTC Thermal Sense	SOP8	MP
TMI4056/H	2.5-26	4.2-4.35	Adj. up to 1.0	/	4.2/4.35	High VIN with System Power 5.7V Clamp Output	DFN3*3-10	ES
STI8019	4.3 to 6	4.2 ± 2%	Adj. up to 1.0	40	6V	Linear Charger + Boost Converter	QFN4x4-24	MP

Battery Protection IC

Single Cell Battery Protection IC

Part Number	V _{ovp} (V)	V _{ovr} (V)	V _{uvp} (V)	V _{uvr} (V)	V _{DOCP} (mV)	Package	Status
SIT8036	4.3	4.1	2.5	2.9	200	SOT23-6	MP

2 Cells Battery Protection IC

Part Number	V _{ovp} (V)	V _{ovr} (V)	V _{uvp} (V)	V _{uvr} (V)	V _{DOCP} (mV)	Package	Status
TMI4022A	4.3	4.10	2.9	3	200	SOT23-6	MP
TMI4022B	4.28	4.08	2.9	3	200	SOT23-6	MP
TMI4022C	4.25	4.05	2.5	3	200	SOT23-6	MP
TMI4021	3.65	3.4	2	2.5	200	SOT23-6	MP

3 Cells Battery Protection IC (With Sense Resistor)

Part Number	V _{ovp} (V)	V _{ovr} (V)	V _{uvp} (V)	V _{uvr} (V)	V _{dOCP} (mV)	V _{cOCP} (mV)	Discharge OTP (°C)	Charge OTP (°C)	Package	Status
SIT8992A	4.25	4.15	2.7	3	100	50	70	50	MSOP10	MP
SIT8992B	4.2	4.1	2.7	3	50	20	70	50	MSOP10	MP
SIT8992C	4.225	4.025	2.7	3	100	40	70	50	MSOP10	MP
SIT8992D	3.9	3.8	2.3	2.7	100	40	70	50	MSOP10	MP
SIT8992G	4.25	4.15	2.7	3	50	20	70	50	MSOP10	MP

3 Cells Battery Protection IC (Without Sense Resistor)

Part Number	Vovp (V)	Vovr (V)	Vuyp (V)	Vuvr (V)	Vdocp (mV)	Vcocp (mV)	Discharge OTP (°C)	Charge OTP (°C)	Package	Status
SIT8992SA	4.25	4.05	2.7	3	50	30	70	50	SOP8	MP
SIT8992SB	4.2	4.05	2.7	3	100	50	70	50	SOP8	MP
SIT8992SC	4.225	4.025	2.7	3	100	40	70	50	SOP8	MP
SIT8992SD	3.9	3.8	2.3	2.7	100	40	70	50	SOP8	MP

3/4 Cells Battery Protection IC (NMOS Control)

Part Number	Vovp (V)	Vovr (V)	Vuyp (V)	Vuvr (V)	Vdocp (mV)	OCP	Over Discharge Lock	Open Wire Detection	Package	Status
SIT8993A	4.25	4.24	2.7	3	0.1	Yes	Yes	Yes	TSSOP16	MP
SIT8993B	3.9	3.6	2.2	2.7	0.1	Yes	Yes	Yes	TSSOP16	MP
SIT8993C	4.25	4.24	2.7	3	0.05	Yes	Yes	Yes	TSSOP16	MP
SIT8993D	3.85	3.75	2.2	2.5	0.1	Yes	Yes	Yes	TSSOP16	MP
SIT8993E	3.75	3.65	2.3	2.5	0.1	Yes	Yes	Yes	TSSOP16	MP
SIT8993F	3.9	3.6	2.2	2.7	0.05	Yes	Yes	Yes	TSSOP16	MP

3/4 Cell Battery Protection IC (PMOS Control)

Part Number	Vovp (V)	Vovr (V)	Vuyp (A)	Vuvr (μA)	V _{IV1} (V)	Charge at 0V	Package	Status
TMI4042A	4.25	4.15	2.7	3	0.2	Yes	TSSOP16	MP
TMI4042B	3.9	3.8	2.3	2.7	0.3	Yes	TSSOP16	MP
TMI4042C	4.25	4.1	2.5	3	0.1	Yes	TSSOP16	MP
TMI4042D	4.275	4.075	2.3	2.7	0.13	Yes	TSSOP16	MP
TMI4042E	4.25	4.1	3	3.2	0.1	Yes	TSSOP16	MP

4/5 Cells Battery Protection IC

Part Number	Vovp (V)	Vovr (V)	V _{BL} (V)	Vuyp (V)	Vuvr (V)	Vdocp (V)	Vcocp (V)	Over Discharge Lock	Open Wire Detection	Package	Status
SIT8995A	4.25	4.15	4.2	2.7	3	0.1	0.05	Yes	Yes	TSSOP20	MP
SIT8995B	3.9	3.6	3.85	2.2	2.7	0.1	0.05	Yes	Yes	TSSOP20	MP
SIT8995C	3.85	3.75	3.65	2	2.5	0.1	0.015	Yes	Yes	TSSOP20	MP

6/7 Cells Battery Protection IC

Part Number	V _{ovp} (V)	V _{ovr} (V)	V _{BL} (V)	V _{uvp} (V)	V _{uvr} (V)	V _{dopc} (V)	V _{cocp} (V)	Over Discharge Lock	Open Wire Detection	Package	Status
SIT8997A	4.25	4.15	4.2	2.7	3	0.1	0.05	Yes	Yes	TSSOP20	MP
SIT8997B	3.9	3.6	3.85	2.2	2.7	0.1	0.05	Yes	Yes	TSSOP20	MP
SIT8997C	3.85	3.75	3.8	2.2	2.5	0.1	0.05	Yes	Yes	TSSOP20	MP

7/8/9/10 Cells Battery Protection IC

Part Number	V _{ovp} (V)	V _{ovr} (V)	V _{BL} (V)	V _{uvp} (V)	V _{uvr} (V)	V _{dopc} (V)	V _{cocp} (V)	Over Discharge Lock	Open Wire Detection	Package	Status
TMI4101A	4.25	4.15	4.2	2.7	3	0.1	0.05	Yes	Yes	SSOP28	MP
TMI4101B	3.9	3.6	3.85	2.2	2.7	0.1	0.05	Yes	Yes	SSOP28	MP

11/12/13/14 Cells Battery Protection IC

Part Number	V _{ovp} (V)	V _{ovr} (V)	V _{BL} (V)	V _{uvp} (V)	V _{uvr} (V)	V _{dopc} (V)	V _{cocp} (V)	Over Discharge Lock	Open Wire Detection	Package	Status
TMI4151A	4.25	4.15	4.2	2.7	3	0.1	0.05	Yes	Yes	TSSOP30	MP
TMI4151B	3.9	3.6	3.85	2.2	2.7	0.1	0.05	Yes	Yes	TSSOP30	MP

2/3/4/5 Cells Battery Secondary Protection

Part Number	V _{ovr} (V)	V _{HYS} (V)	V _{uvp} (V)	I _q (μ A)	Delay(S)	Output	Package	Status
TMI4302A	3.9	0.1	<2	<2.5	2	CMOS,Active H	MSOP8	MP
SIT1051A	4.225	0.1	<2	<2.5	2	CMOS,Active H	MSOP8	MP
SIT1051B	4.25	0.1	<2	<2.5	2	CMOS,Active H	MSOP8	MP
SIT1051C	4.225	0.1	<2	<2.5	2	CMOS,Active H	SOP8	MP
SIT1051D	4.25	0.1	<2	<2.5	2	NMOS open drain, Active H	SOP8	MP



MARKETING NETWORK



营销网络

电子邮件 E-mail: sales@toll-semi.com



西安 XI' AN

地 址: 西安市高新区科技二路72号软件园零壹广场B201
联系电话 TEL: +86-029-8754 7686 (西安)



深圳 SHENZHEN

地 址: 深圳市宝安区西乡宝源路华丰金源商务大厦B座215
联系电话 TEL: +86-188 2463 5685 (深圳)



台湾 TAIWAN

地 址: 新北市樹林區保安街一段364號4樓
联系电话 TEL: +886-972165345 (台湾)

